

Water's Edge Lot 89

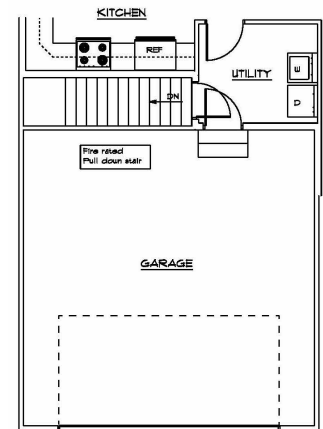
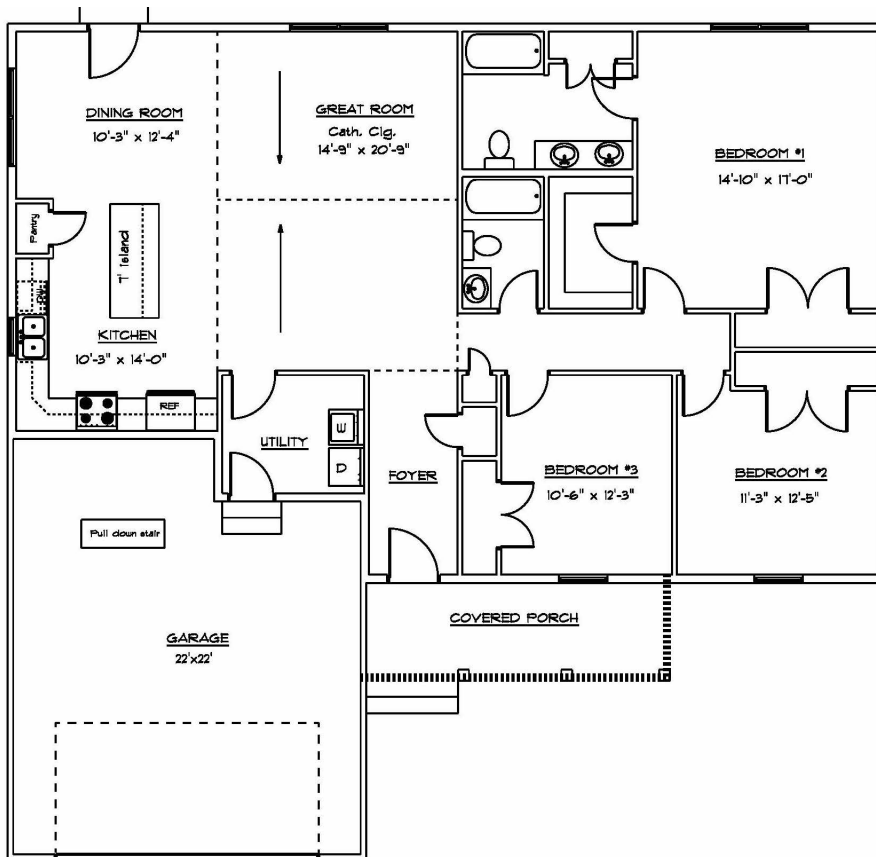
TBD (Frederica)

\$259,900

3 Bedrooms

2 Bathrooms

1,668 sq. ft.



Optional Basement Stair



Exceeding Your Expectations

visit **LaytonBuilders.com**

The specific features in a home may vary from home to home and from one community to another. Square footage and dimensions are estimated and may vary in actual construction. We reserve the right to substitute equipment, material, appliances and brand names with items of equal or higher value at our sole discretion. As we continue to improve our customer satisfaction we occasionally make changes to specific floor plans. This flyer, which is for marketing purposes only, reflects changes made as of 9/12/2018. Homes built prior to that date may have slight variations. Floor plans are the copyrighted property of Layton Builders.



2135 Milford-Harrington Hwy.
Milford, DE 19963
Phone: 302-698-7583
Fax: 302-450-7456

Quick Delivery - Water's Edge Lot 89 (Bella)

Print-date: 9-12-2018

Pricing Valid for 10 days from date of quotation. All pricing is based upon the current costs of materials and labor.

Price Breakdown

Base Price of the Bella Model in Water's Edge

Basement Options

Description

Full Unfinished Basement with 8' Ceiling

Egress Window

Total Price:

\$259,900.00

STANDARD FEATURES



EXTERIOR FEATURES

- ✓ 2-Car Garage
- ✓ Concrete Driveway
- ✓ Concrete Public Sidewalks
- ✓ Maintenance Free Vinyl Siding
- ✓ Low-E Vinyl Windows with Grids & Screens
- ✓ Therma-Tru Exterior Front Door
- ✓ Fiberglass Exterior Doors
- ✓ Board N Batten Shutters on Front of Home
- ✓ 30-Year Architectural Shingles
- ✓ Attic Ridge Vent & Ventilated Soffits
- ✓ 2 Exterior Electrical Outlets
- ✓ 4" Aluminum Gutters & Downspouts
- ✓ 2 Frost Proof Hose Bibs
- ✓ All Utilities are Underground
- ✓ Graded and Seeded Lawn
- ✓ Landscaping Package

MECHANICAL FEATURES

- ✓ Natural Gas
- ✓ Utility Water + Sewer
- ✓ 200 AMP Electric Service
- ✓ High Efficiency Gas Furnace
- ✓ High Efficiency Air Conditioner
- ✓ 50-Gallon Electric Hot Water Heater

INTERIOR FEATURES

- ✓ Two Panel Square Interior Doors
- ✓ Satin Nickel Door Knobs and Hinges
- ✓ Vinyl Floors in Foyer, Kitchen, Laundry + All Bathrooms
- ✓ Brilliant White Trim Throughout
- ✓ Wall to Wall Carpet
- ✓ 9' Ceilings
- ✓ 42" Aristokraft Cabinets in Kitchen + Baths
- ✓ Stainless Steel Double Kitchen Sink
- ✓ Stainless Steel Range, Dishwasher, and Microwave
- ✓ Virginia Marble Vanity Tops with Integral Bowl
- ✓ Moen Faucets in Kitchen and Baths
- ✓ Sherwin Williams Paint for Wall + Ceilings
- ✓ One (1) Phone Jack
- ✓ Cable Jack in Family Room and Master Bedroom
- ✓ Ceiling Fan/Light in Family Room + Master Bedroom
- ✓ Hard-Wired Smoke/CO Detectors
- ✓ Carriage House-Style Garage Doors w/ Opener & Remote
- ✓ Washer & Dryer Outlets
- ✓ Interior Exhaust Fans in Baths
- ✓ Satin Nickel Designer Light Fixture Package
- ✓ Recessed Lighting in Kitchen
- ✓ Mirrors Over All Vanities
- ✓ Satin Nickel Bath Hardware in Baths
- ✓ Vinyl-Coated Shelving in Closets

visit LaytonBuilders.com



Exceeding Your Expectations

The specific features in a home may vary from home to home and from one community to another. Square footage and dimensions are estimated and may vary in actual construction. We reserve the right to substitute equipment, material, appliances and brand names with items of equal or higher value at our sole discretion. As we continue to improve our customer satisfaction we occasionally make changes to specific floor plans. This flyer, which is for marketing purposes only, reflects changes made as of 7/26/18. Homes built prior to that date may have slight variations. Floor plans are the copyrighted property of Layton Builders.